

# Resort Catalog

2026 Edition

salteebay

**Effortless Essentials. Made for Resort.**

JK INTERNATIONAL

We simplify sourcing and development for fashion buyers and resortwear brands:

## **Resortwear Development**

## **Custom & Ready Styles**

## **Sampling & Fitting**

## **Fabric & Trim Selection**

## **Bulk Production**

## **Quality Control**

## **Export Packaging**

## **Worldwide Delivery**

# **We Help You Source Smarter**

---

At SALTEEBAY, a label by JK International, we specialize in helping global buyers bring premium resortwear visions to life with precision, scale, and reliability. Whether you're a retailer, importer, or private label brand, we provide everything you need to develop and produce bestselling styles with ease.

From trend-forward ready designs to fully custom development, we manage the entire process in-house, from fabric sourcing and sampling to bulk production, quality control, and international shipping.

We are equipped to handle large-scale orders, with flexible timelines, consistent communication, and uncompromised quality, making us the ideal manufacturing partner for established buyers and scaling brands worldwide.

Every order goes through our structured workflow, including expert pattern development, fabric optimization, meticulous trim handling, and secure packaging. Our team is hands-on and transparent through every stage of production.

**At SALTEEBAY, we're committed to helping you scale your resortwear collection with professional support, global readiness, and stylish execution.**



# JK International

---

**Effortless Design, Custom Label  
Ready**

Curated, Trend-Driven Styles. Delivered Fast.

**CONTACT US TO ORDER**

# Step-by-step

## Preparation

## Sampling Stage

1-2 Months

## Production Stage

2-3 Months

## Delivery

### ① Browse Our Catalog / Submit Design Brief

1-2 weeks

JK INTERNATIONAL

#### Option A – From Our Catalog

Explore our curated garment collection. Choose styles you like and we'll proceed with sampling.

#### Option B – Custom Design

Send us your design brief, reference images, or moodboards. We'll collaborate with you on fabric, trims, and construction ideas.

#### We develop and ship samples for your approval. This includes:

- Construction samples
- Print/embroidery placement
- Packaging previews (if needed)

Revisions are done if necessary. Weekly progress updates are provided.

#### Once samples are approved, your bulk order enters production. Includes:

- Fabric & trim sourcing
- Cutting, stitching, finishing
- Quality control & packing

Weekly updates throughout the process.

**We handle the logistics and documentation for international delivery. You'll receive a tracking ID and shipping support from our team.**

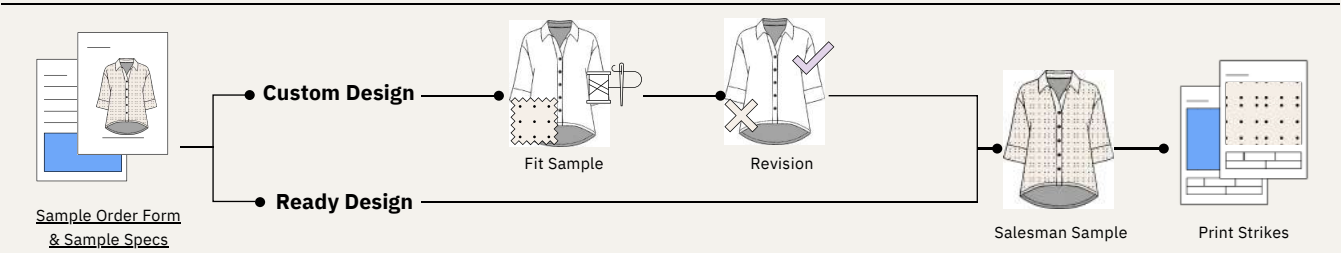
### ② Sampling Phase 1-2 months

### ③ Bulk Production 2-3 months

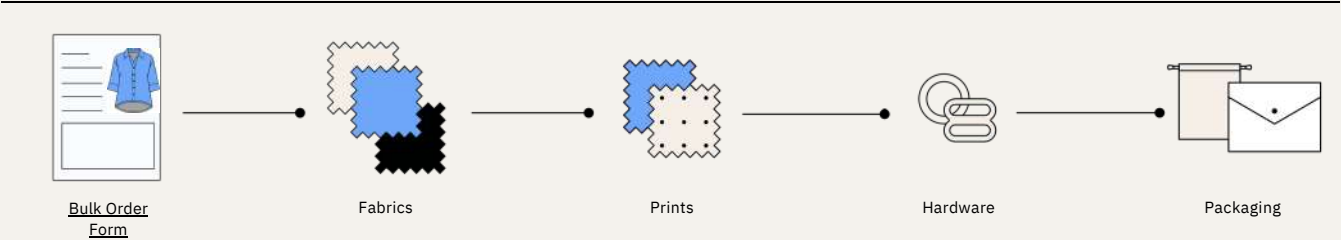
### ④ Delivery Via DHL Express, 4-5 business days worldwide.

You can also mix catalog designs with your custom styles – we're flexible to your creative needs.

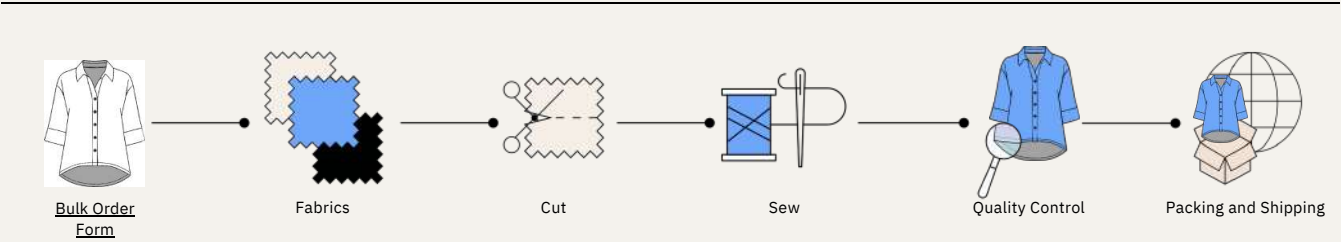
# Sampling



# Bulk Preparation



# Bulk Production





## Ready Design

Ready Design is our pre-developed collection of resortwear styles that are fully prepared for branding and immediate selling. Each year, we conduct extensive trend research to understand what women's apparel is in demand, which styles are fading out, and what the upcoming seasonal directions look like. Using these insights, we craft a collection that merges trend-forward silhouettes with refined, reimagined classics.

This line offers the flexibility to mix and match tops and bottoms across styles or even incorporate them with your custom pieces to build a cohesive resortwear collection. Ready Design styles are available in a selection of curated fabrics, seasonal colors, and exclusive prints. Since all development work — including pattern making and grading — is already done, there are no upfront costs. You simply pay per piece. It's the most time-efficient and cost-effective way to bring your brand to life with minimal setup.

---

## Custom Design

Custom Design is your opportunity to create something entirely your own. Whether you're a designer with full tech packs and patterns or someone with just an idea and reference images, we'll help you translate your vision into production-ready garments. We provide easy-to-follow templates (sample specs) to support every step, from concept to final design. You're welcome to draw inspiration from our Ready Design collection as well — combining elements from different styles or infusing them with your own details to create something unique.

	Service	Price, US\$	Comments
Product Development	Custom Design Development Fee	\$99/design (50% credited to bulk)	We provide service to help you create your custom designs from the ground up, which includes pattern making and size range grading. 50% of the fee will be credited toward your bulk order for each design you develop. Please note that any revisions to your custom design are not covered by this fee.
	Custom Design Sample Fee	3X Bulk Price	Create Samples to Cultivate Your Own Design. The fee covers one sample that we will send to you, along with a copy that we retain. This means you won't need to return your sample, allowing you to save both time and costs during the development process.
	Custom Design Additional Revision Fee	\$49/revision	If any revisions are required following the initial development, there will be a charge for each round of revisions.
	Pre-Production Sample (PPS)	2X Bulk Price	Order with production, delivered early. Max 20PPS and 1 size per style/color/print. Additional sizes or 20+ counts as regular sample (3x).
	Ready Design Sample Fee	3X Bulk Price	No development cost, pay per pieces. Make samples to test colors, prints and hardware for Ready Design.
Prints & Graphics	Print Strike(s) & Mock-up	\$25	Digital mock-up of print at different scales on resort model + test print on fabric.
	Print Placement (Rare)	\$35/style/size	Only for prints with a set specific layout on product. Development cost to finalize pattern digitally and placing print according to spec.
	Logo Re-work (Optional)	\$35	If your logo is of low resolution, file corrupt, or need other adjustment or even re-creation. One-time charge.
	Packaging Development	\$10/design	Includes layout of logo/tagline/website on packaging option, mock-up for approval and actual sample.
	Other Graphic Work	\$25/hour	

# MOQ Per Order

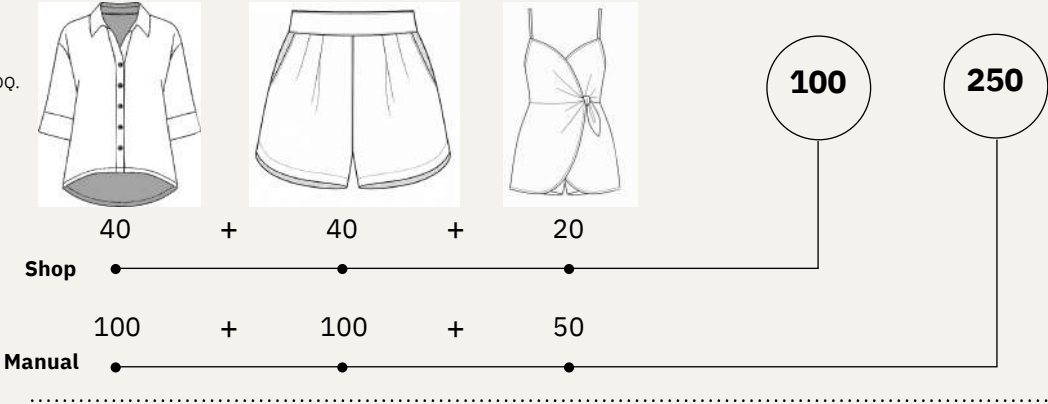
**Samples**  
No MOQ.

**Shop**  
MOQ 100 pcs/order.

**Manual (Custom Design or Mix)**  
MOQ 250 pcs/order.

Example: You can order 40 tops,  
40 bottoms, and 20 dresses  
to reach our Website Order MOQ.

You can order 100 tops, 100  
bottoms, and 50 dresses  
to reach our Manual Order MOQ.





## MOQ Per Style/Color/Print

Our MOQ per style and color/print is 40pcs.

Example: If you want a particular top in blue, sand and leopard print, you have to order at least 40 pcs of each.



Blue Tops



Sand Tops



Printed Tops

## MOQ Per Size

Our MOQ per size 6 pcs. You need to order minimum 6 of each size you want your garment in.

Example: If you want your purple top in a size range of XS-L, then you can order 6XS, 14S, 14M, and 6L. You can order more however you like, and use any size range you prefer, but for whatever size you choose, you need to order at least 6 pcs.



XS



S



M



L

# Ready Design 2026

---

Mix and match tops and bottoms between any styles you wish. You could even combine our designs with your own to complete your resort line. Take the designs as they are (and add your choice of colors) and you'll have a development fee-free experience (pattern making & grading)!

If you want other styles or to adjust the cuts of our styles in other ways, you can - but we'll treat it as a custom design and we need to re-develop the style from scratch. This would include development fees.

Adding or switching a small accessory and embroidery details are most likely acceptable without re-development. If you have a special request, just ask! We'll do what we can to help.

We will be releasing new designs yearly, both classics, trendy, and statement.





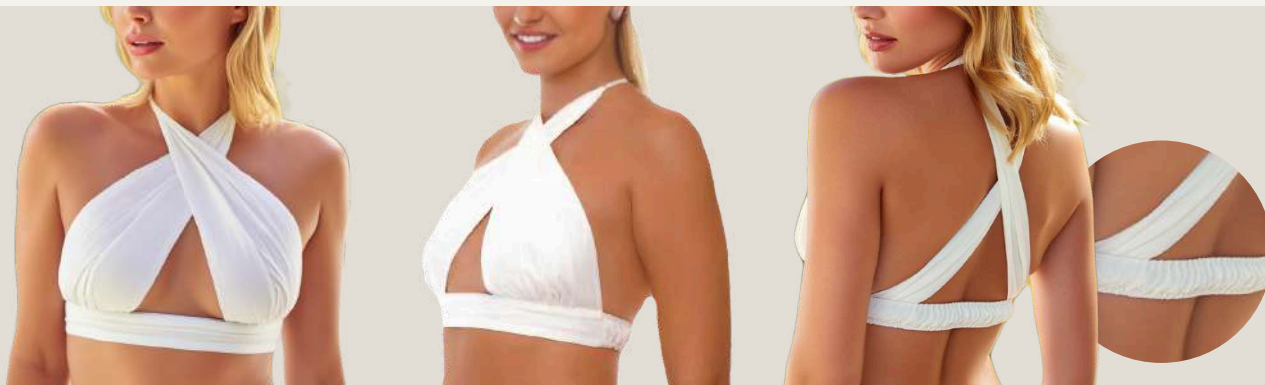
# Classic Styles

**Garment Name: Criss-Cross Halter Top**

Style Code: SB-SS26-TP-01

◆ **Classic Style**

Category: Tops



**Sculpted neckline with a bold summer silhouette**

**Designed to elevate both resort lounging and evening looks**

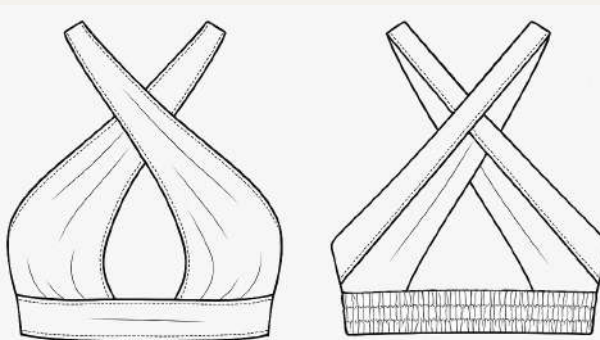
**Fabric:** Viscose Sateen / Bamboo Fabric /  
Poly Rayon Blend

**Sleeve Length:**

**Stitching:** Double-needle hem

**Finish:** Clean finish, elasticated back  
panel

**Hardware:**



**Style Details:**

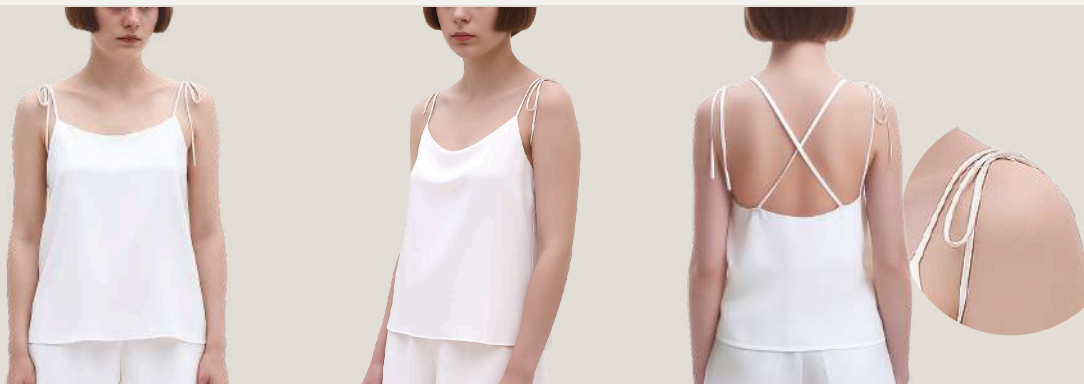
- Criss-cross halter neckline with keyhole
- Wide underbust support band
- Light bust gathering
- Elasticated back
- Bust lining

**Garment Name: Tie-Back Cami Top**

Style Code: SB-SS26-TP-02

◆ **Classic Style**

Category: Tops



**Airy drape and feminine back detail**

**Perfect for resort layering or elevated minimal looks**

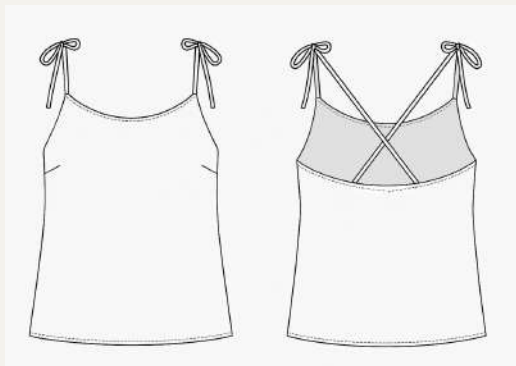
**Fabric:** Viscose Sateen / Bamboo Fabric /  
Poly Sateen

**Sleeve Length:**

**Stitching:** French seams or overlocked inside,  
topstitched neck edge

**Finish:** Straight hem, clean internal finish

**Hardware:**



**Style Details:**

- Delicate tie-up shoulder straps
- Scoop neckline
- Criss-cross back straps
- Straight hem

**Garment Name: Handkerchief Hem Tie-Back Top**

Style Code: SB-SS26-TP-03

◆ **Classic Style**

Category: Tops



**Striking angled hem with adjustable back tie**

**Perfect for summer escapes and layered vacay looks**

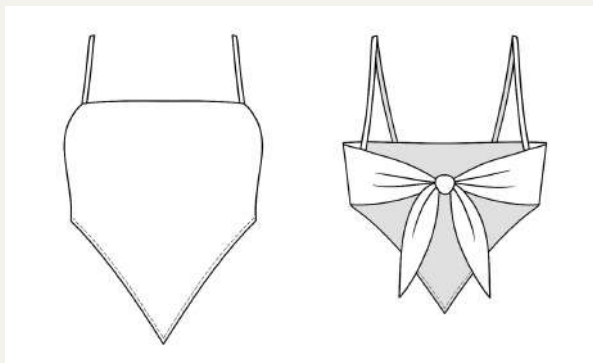
**Fabric:** Linen 17 / Linen crinkle/ Organic Cotton

**Sleeve Length:**

**Stitching:** Overlocked side seams, narrow hem at handkerchief points

**Finish:** Bound neckline, reinforced back tie

**Hardware:**



**Style Details:**

- Handkerchief-style pointed hem
- Square neckline with slim shoulder straps
- Open back with wide self-tie closure

**Garment Name: Oversized Resort Shirt**

Style Code: SB-SS26-TP-04

◆ **Classic Style**

Category: Tops



**Relaxed silhouette and airy sleeve detail**

**Perfect for layering over swim or lounging in luxe comfort**

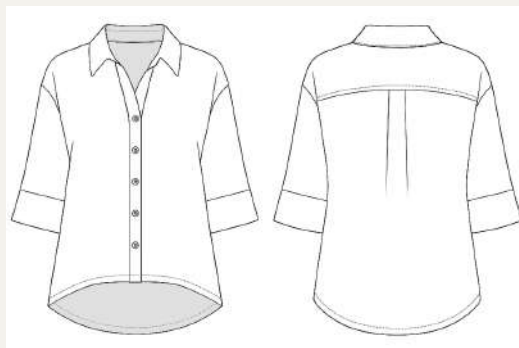
**Fabric:** Pure Linen 14 / Organic Cotton /  
Linen Crinkle

**Sleeve Length:** 3/4th length

**Stitching:** Flat-felled seams, topstitched  
collar

**Finish:** High-low hem, box pleat at back

**Hardware:** Shell or tonal buttons



**Style Details:**

- Collared button-down with dropped shoulders
- Wide 3/4th sleeves with cuff panel
- Box pleat at back
- High-low hem



**Garment Name: Paperbag Tie-Waist Shorts**

Style Code: SB-SS26-BT-01

◆ **Classic Style**

Category: Bottoms



**High-rise fit with a cinched waist silhouette**

**Ideal for summer lounging or styling with resort separates**

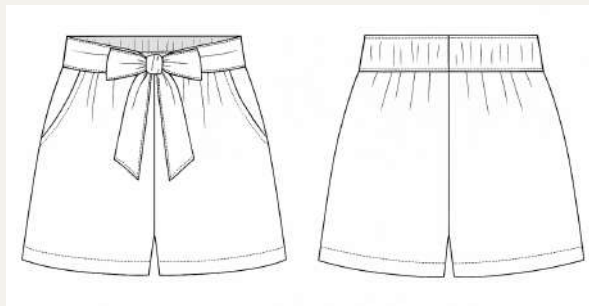
**Fabric:** Linen Crinkle / Linen 17 / Bamboo  
Fabric

**Inseam Length:** Short

**Stitching:** Double topstitch on waistband,  
overlocked inseam

**Finish:** Detachable belt, side pockets

**Hardware:**



**Style Details:**

- Paperbag-style high waistband with soft gathers
- Self-fabric waist tie belt (detachable)
- Slanted side pockets
- Elastic panel at back waist



**Garment Name: Curved Hem Pull-On Shorts**

Style Code: SB-SS26-BT-02

◆ **Classic Style**

Category: Bottoms



**Curved hem with easy movement and soft structure**

**Ideal for lounging, strolls, or layering over swimwear**

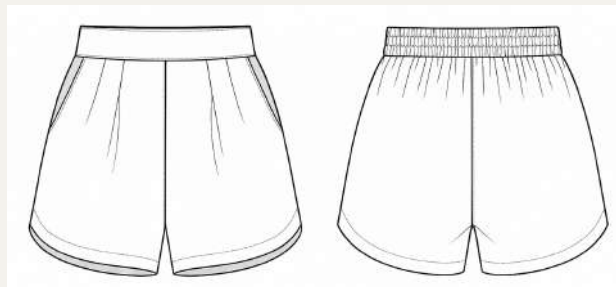
**Fabric:** Bubble Cotton / Organic Cotton /  
Poly Rayon Blend  
Short

**Inseam Length:**

**Stitching:** Overlocked, curved hem folded

**Finish:** Flat front, elasticated back

**Hardware:**



**Style Details:**

- Curved overlapping hemline
- Flat front waistband with soft pleats
- Elasticated back waistband
- Slanted side pockets

**Garment Name: Side-Slit Resort Pants**

Style Code: SB-SS26-BT-03

◆ **Classic Style**

Category: Bottoms



**Statement side slits and fluid drape**  
**Ideal for poolside styling or elevated beach evenings**

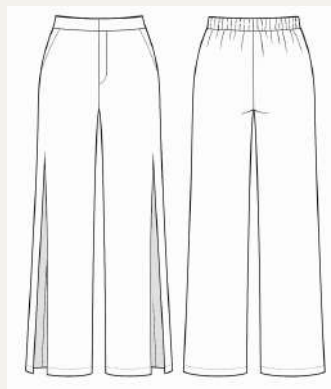
**Fabric:** Viscose Sateen / Linen 14 / Crepe  
Bamboo

**Inseam Length:** Ankle length

**Stitching:** Inside overlocked with slit edges faced

**Finish:** Functional pockets, clean waistband

**Hardware:**



**Style Details:**

- High-rise flat front waistband
- Dramatic high side slits on both legs
- Elasticated back waistband
- Functional side pockets

**Garment Name: Front-Slit Resort Pants**

Style Code: SB-SS26-BT-04

◆ **Classic Style**

Category: Bottoms



**Resort pants featuring front slits and a tailored waistband finish**  
**Perfect for elevated vacation styling, poolside layering, or relaxed daywear**

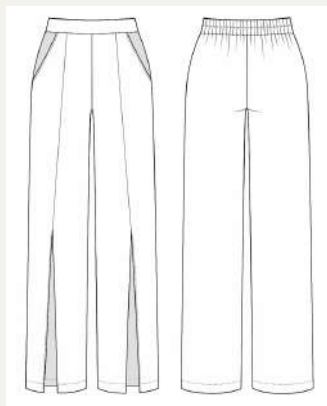
**Fabric:** Viscose Sateen / Crepe Bamboo /  
Linen 14

**Inseam Length:** Ankle length

**Stitching:** Topstitched seams, bound slits

**Finish:** Flat front, back elasticated

**Hardware:**



**Style Details:**

- Wide-leg flowy silhouette
- Front slits
- Flat front waistband with back elastic
- Seamless side pockets

**Garment Name: Knotted Wrap Romper**

Style Code: SB-SS26-DR-01

◆ **Classic Style**

Category: Dresses / Playsuits



**Graceful wrap-front silhouette with feminine knot detail**  
**Ideal for day-to-night resort looks or elevated minimal dressing**

**Fabric:** Linen / Modal Cotton / Viscose  
Sateen

**Sleeve Length:**

**Length:** Short-length romper

**Stitching:** Faux-wrap with topstitch, invisible  
zipper at center-back

**Finish:** Curved overlap hem

**Hardware:** Invisible zip



**Style Details:**

- Sweetheart neckline
- Spaghetti straps
- Faux-wrap front with waist knot
- Curved overlapping panel
- Center-back zipper
- Bust area lining

**Garment Name: Criss-Cross Strap Ladder-Front Midi Dress**

Style Code: SB-SS26-DR-02

◆ **Classic Style**

Category: Dresses



**Breezy and elegant with modern ladder-front detail**

**Ideal for summer soirées or resort evenings**

**Fabric:** Viscose Sateen / Poly Sateen/ Organic Cotton

**Sleeve Length:**

**Length:** Midi length

**Stitching:** Princess seams bound inside, bartacked ladder straps

**Finish:** Clean hem, open back tie

**Hardware:** Zipper



**Style Details:**

- Deep V-neckline with ladder strap detail at bust
- Spaghetti shoulder straps
- Criss-cross open back with fixed tie at waist and zipper on side
- Fitted bodice with princess seams
- Upper bodice lining

**Garment Name: Relaxed Shirt Midi Dress with Cap Sleeves**

Style Code: SB-SS26-DR-03

◆ **Classic Style**

Category: Dresses



## **Relaxed Shirt Silhouette with a Breezy High-Low Hem**

### **Effortlessly chic for beach layering, lounging, or summer errands**

**Fabric:** Linen Crinkle/ Organic Cotton/ Poly Rayon

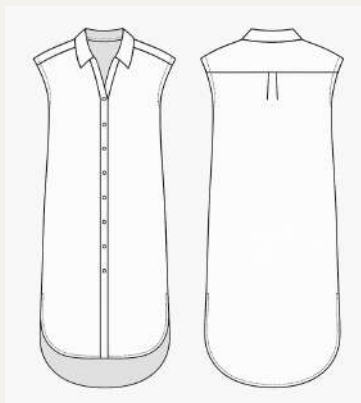
**Sleeve Length:** Cap sleeves

**Length:** Midi length

**Stitching:** Flat-felled seams, topstitching at placket

**Finish:** Button-down front, high-low hem  
with side slits

**Hardware:** Tonal buttons



#### **Style Details:**

- Relaxed shirt dress with drop shoulder and extended cap sleeves
- Full-length front button closure
- Rounded high-low hem with side slits

**Garment Name: Ring-Front Strappy Dress**

◆ **Classic Style**

Style Code: SB-SS26-DR-04

Category: Dresses



**Breezy elegance with a touch of shine**

**Perfect for sun-drenched getaways or elevated resort lounging**

**Fabric:** Viscose Sateen / Crepe Bamboo / Poly/  
Linen/ Viscose

**Sleeve Length:**

**Length:** Maxi length

**Stitching:** Tiered hem with narrow finish, reinforced  
bust

**Finish:** Back tie closure, resin ring at center

**Hardware:** Resin ring



**Style Details:**

- Slim shoulder straps
- Plunging V-neckline with center ring embellishment
- Tie at mid-back
- Gently flared A-line silhouette
- Ruffled tiered hem



# Trendy Styles



**Garment Name: Scallop Hem Tie-Up Puff Sleeve Top**

Style Code: SB-SS26-TP-05

◆ Trendy Style

Category: Tops



**Romantic charm and breezy silhouette**

**A fusion of sleeves, scallop trims, and delicate tassel-tie finish**

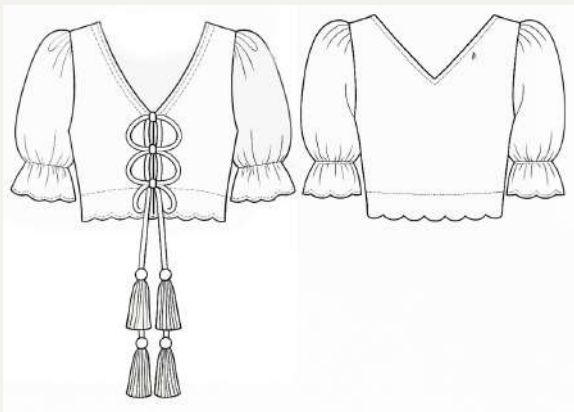
**Fabric:** Slub Cotton / Organic Cotton /  
Linen Cotton Blend

**Sleeve Length:** Elbow-length puff sleeves

**Stitching:** Scallops hand-cut or laser-  
finished, gathered sleeve cuffs

**Finish:** Clean neckline and hem

**Hardware:** Cotton tassels & soft rope tie



**Style Details:**

- Front tie-up loops with tassel detail
- V-neckline front and back
- Puff sleeves with gathered cuff
- Scalloped hem finish

**Garment Name: Shell Strap Ruffle Crop Top**

Style Code: SB-SS26-TP-06

◆ **Trendy Style**

Category: Tops



## **Statement Shoulder Detail with a Sculpted Silhouette**

### **Perfect for elegant resort evenings or elevated festive wear**

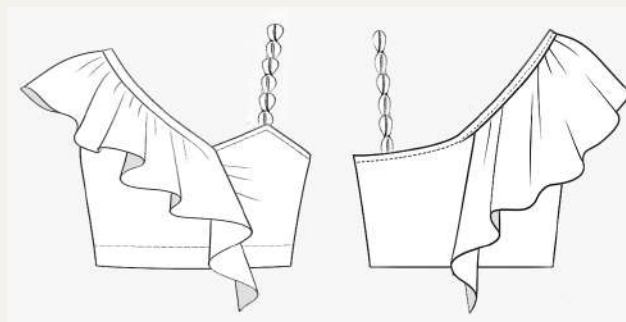
**Fabric:** Poly-Crepe / Linen Crinkle /  
Viscose Sateen

**Sleeve Length:**

**Stitching:** Clean edge seams, bartack on  
ruffle joins

**Finish:** Detachable scarf with loop  
fastening

**Hardware:** Shell-beaded strap (fixed)



#### **Style Details:**

- Asymmetric one-shoulder
- Elasticated detachable scarf for movable sleeves
- Dramatic cascading ruffle scarf from front to back
- Shell-embellished single shoulder strap

**Garment Name: Halter Tie Peplum Top**

◆ **Trendy Style**

Style Code: SB-SS26-TP-07

Category: Tops



**Sweet silhouette and sculpted fit**

**Perfect for vacation dinners or daytime statement style**

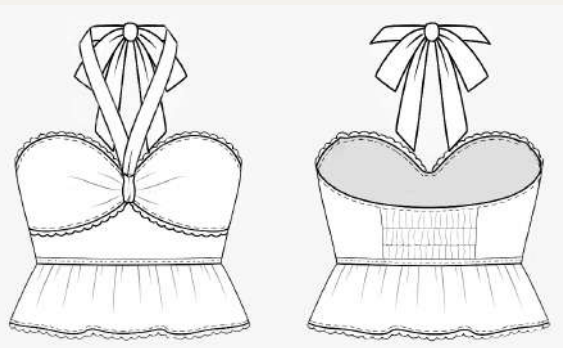
**Fabric:** Cotton Poplin / Linen Blend /  
Organic Cotton

**Sleeve Length:**

**Stitching:** Lace trims topstitched; peplum  
edge double hemmed

**Finish:** Elastic smocked back, back neck  
tie

**Hardware:**



**Style Details:**

- Halter neck with center knot tie
- Soft sweetheart bustline
- Double-tiered peplum waist
- Lace scallop trims at bust, waist, and hem
- Back neck tie with elasticated smocking

**Garment Name: Shell Embroidered Cape Top**

Style Code: SB-SS26-TP-08

◆ **Trendy Style**

Category: Tops



**Breezy silhouette with statement cutwork hem**

**Perfect for nautical-inspired resort dressing**

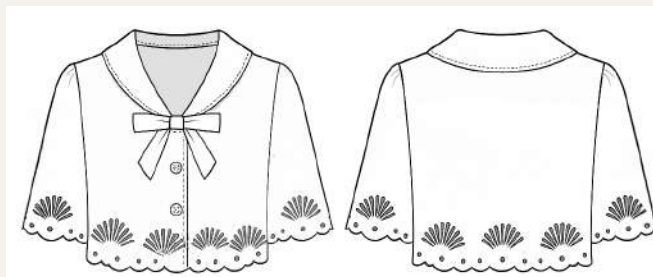
**Fabric:** Cotton Twill / Bubble Cotton /  
Poly-Crepe

**Sleeve Length:** Elbow-length cape  
sleeves

**Stitching:** Shell embroidery laser cut or  
hand stitched

**Finish:** Clean finish with cape overlay

**Hardware:** Shell-shaped tonal buttons



**Style Details:**

- Structured sailor collar with bow tie
- Cape-style overlay with relaxed drape
- Scalloped sleeves and hem with shell cutwork embroidery
- Front placket with decorative shell buttons

**Garment Name: Shell & Starfish Embroidered Shorts**

◆ **Trendy Style**

Style Code: SB-SS26-BT-05

Category: Bottoms



**Tailored fit with elegant beachside embroidery**  
**Perfect for elevated daywear and seaside escapes**

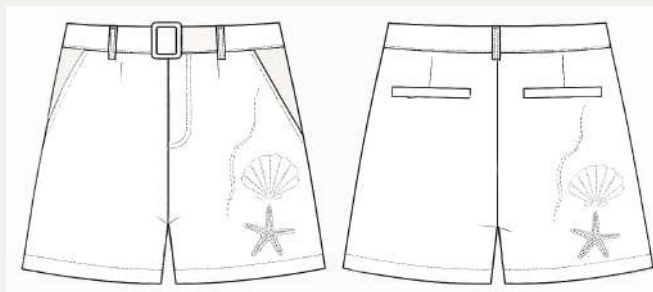
**Fabric:** Linen Blend / Cotton  
Twill / Organic Cotton

**Inseam Length:** Short

**Stitching:** Laser-cut/hand embroidery,  
topstitched waistband

**Finish:** Hook & bar with hidden zip fly

**Hardware:** Embroidery, zip



**Style Details:**

- Mid-thigh tailored silhouette
- Tonal sea-inspired embroidery
- Clean waistband and detachable belt
- Front and back pockets
- Cutwork embroidery on front and back legs

**Garment Name: Shell Embroidered Scallop Wrap Skirt**

Style Code: SB-SS26-BT-06

◆ Trendy Style

Category: Bottoms



**Breezy movement with feminine wrap detail**

**Perfect for resort dressing with playful shell accents**

**Fabric:** Cotton Twill / Linen 14 /  
Poly/Linen/Cotton

**Length:** Midi length

**Stitching:** Scallop hem, embroidery  
stitched flat

**Finish:** Fixed waistband, internal button  
wrap

**Hardware:** Optional custom embroidery



**Style Details:**

- Elegant shell embroidery along entire hem (front, side & back)
- Feminine front wrap with scalloped edge
- A-line flare with fixed high waistband

**Garment Name: Nautical Charm Crochet Shorts**

Style Code: SB-SS26-BT-07

◆ **Trendy Style**

Category: Bottoms



**Nautical textures and playful trims**

**Perfect for beach lounging or standout resort styling**

**Fabric:** Open-Weave Cotton  
Crochet / Cotton Gauze

**Inseam Length:** Short

**Stitching:** Crochet base, bound  
hem

**Finish:** Adjustable charms on  
ring loops

**Hardware:** Crochet charms,  
rings



**Style Details:**

- High-rise wrap-over panel on front left leg
- 3D nautical crochet charms
- Straight hem with bound edge finish
- Detachable and adjustable charm string



**Garment Name: Shell Embroidered Tiered Skirt**

Style Code: SB-SS26-BT-08

◆ **Trendy Style**

Category: Bottoms



**Airy tiers with embroidered shell motifs**

**Perfect for beach getaways or elevated summer wear**

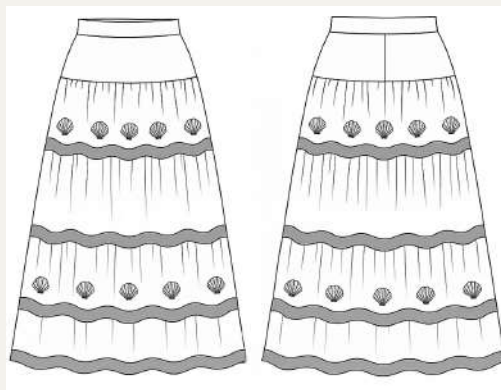
**Fabric:** Poly-Cotton Mesh / Sheer Net /  
Viscose Sateen

**Length:** Maxi length

**Stitching:** Bound seams or French seam  
finish

**Finish:** Concealed side zip, scallop bands

**Hardware:** Shell embroidery



**Style Details:**

- Alternate gathered tiers of cotton and sheer
- Shell embroidery detail
- Wide fixed waistband
- Contrast scallop bands
- Side zip closure
- Built-in in opaque tiers



**Garment Name: Criss-Cross Halter Asymmetric Dress**

Style Code: SB-SS26-DR-05

◆ **Trendy Style**

Category: Dresses



**Flattering neckline and layered hem finish**

**Perfect for upscale resort evenings or beach-to-bar transitions**

**Fabric:** Crepe Bamboo / Viscose Sateen / Poly-Crepe

**Sleeve Length:**

**Length:** Asymmetric midi length

**Stitching:** Panel seams at hem

**Finish:** Asymmetrical layered hem

**Hardware:**



**Style Details:**

- Halter neckline with adjustable criss-cross tie straps
- Soft gathered bust with front keyhole detail
- Wide waistband and layered handkerchief hem
- Smocked elastic panel at back
- Full lining

**Garment Name: Fringed Tiered Resort Halter Dress**

Style Code: SB-SS26-DR-06

◆ Trendy Style

Category: Dresses



**Breezy silhouette with gathered tiers and playful fringe trim**

**Perfect for elevated tropical escapes and vacation dressing**

**Fabric:** Modal-Cotton / Rayon Slub / Viscose Sateen

**Sleeve Length:**

**Length:** Maxi length

**Stitching:** Tiers gathered with fringe stitched  
between

**Finish:** Elasticated shirred back panel

**Hardware:** Metal neck clasp



**Style Details:**

- Halter neckline with ruched detailing and back neck clasp
- Double front cut-outs
- Triple gathered tiers
- Fringe trims at every tier seam and hem

**Garment Name: Twist Front Cutout Halter Midi Dress**

Style Code: SB-SS26-DR-07

◆ **Trendy Style**

Category: Dresses



**Effortless elegance with sculpted twist-front bodice**

**Perfect for breezy, statement-making resort looks**

**Fabric:** Rayon Slub Jersey / Poly Sateen / Viscose  
Sateen

**Sleeve Length:**

**Length:** Midi length

**Stitching:** Invisible tacks at twist, bound cutouts

**Finish:** Elasticated back band

**Hardware:**



**Style Details:**

- Twist-front halter neckline with self-tie straps
- Gathered bust and draped front panel
- Side cutouts leading to lower back waistline

**Garment Name: Shell-Appliqué Sweetheart Dress**

Style Code: SB-SS26-DR-08

◆ **Trendy Style**

Category: Dresses



**Breezy elegance with structured shell sculpting**  
**Perfect for elevated resortwear or beach-to-dinner styling**

**Fabric:** Cotton Twill / Poly-Crepe / Bubble Cotton

**Sleeve Length:**

**Length:** Midi length

**Stitching:** Shell shape hand-appliquéd, lined bodice

**Finish:** Invisible zipper, clean hem

**Hardware:** Side invisible zip



**Style Details:**

- Sweetheart neckline with sculpted shell-style appliqué over bust
- Appliqué curves from front to back, forming a full shell outline
- Full lining



# Statement Styles

**Garment Name: Tie-Front Shell Cutwork Top**

Style Code: SB-SS26-TP-09

◆ **Statement Style**

Category: Tops



**Statement sleeve top with playful front tie & airy summer detailing**

**Perfect for tropical getaways or chic resort evenings**

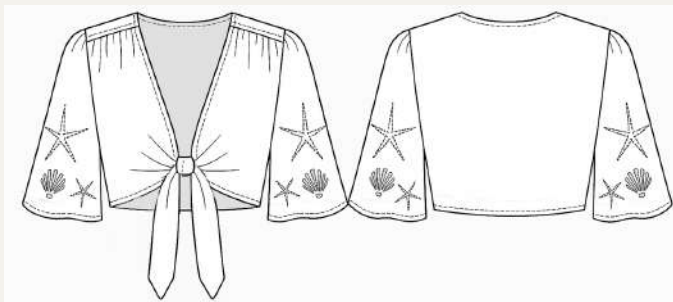
**Fabric:** Cotton Poplin / Organic  
Cotton / Modal-Cotton

**Sleeve Length:** Elbow-length flared  
sleeves

**Stitching:** Scallop sleeve edge with  
clean finished front tie

**Finish:** Facing at neckline, shell  
embroidery on sleeves

**Hardware:**



**Style Details:**

- Deep V neckline with knotted tie-front
- Elbow-length flared sleeves with scalloped edges
- Starfish and shell embroidery on sleeves
- Gathered shoulder seams for volume

**Garment Name: Nautical Charm Trim Crochet Top**

Style Code: SB-SS26-TP-10

◆ **Statement Style**

Category: Tops



## Playful Crochet Layers with Statement Nautical Charm Embellishments

**Fabric:** Cotton Crochet Knit / Cotton  
Gauze / Bamboo Fabric

**Sleeve Length:** Half-sleeves

**Stitching:** Crochet body with scalloped  
trim in contrast color

**Finish:** Attached crochet charms at  
hem

**Hardware:** Metal rings for 3D charms



### Style Details:

- Relaxed drop shoulder fit
- Boat neckline with contrast scalloped edging
- Blue scalloped crochet trim on hem and sleeves
- Nautical-themed 3D crochet charms on hem



**Garment Name: Coastal Charm Pants**

Style Code: SB-SS26-BT-09

◆ **Statement Style**

Category: Bottoms



**Perfect for sun-drenched escapes or breezy coastal lounging**

**Fabric:** Textured Cotton Knit / Cotton  
Crochet Knit / Crepe Bamboo

**Inseam Length:** Ankle length

**Stitching:** Clean crochet seam join, ring-  
attached charms

**Finish:** Drawcord waist

**Hardware:** Crochet trim charms



**Style Details:**

- Mid-rise wide-leg silhouette
- Adjustable waist tie with hanging crochet charms
- Full-length straight cut
- Unlined for breathable comfort



**Garment Name: Asymmetric Ruched Drawstring Skirt**

Style Code: SB-SS26-BT-10

◆ **Statement Style**

Category: Bottoms



**Sleek silhouette with customizable ruching**

**Effortless resort skirt with a flattering draped side slit**

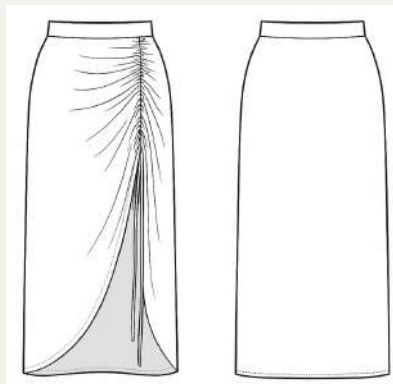
**Fabric:** Satin Viscose / Crepe Bamboo /  
Poly-Crepe

**Length:** Midi length

**Stitching:** Side drawstring with casing, smooth  
hem

**Finish:** Front overlap with bartack

**Hardware:** Minimalist drawcord



**Style Details:**

- Adjustable side ruching with long self-tie drawstring
- High-rise waistband with smooth finish
- Asymmetrical front overlap hem
- Midi length with dramatic slit

**Garment Name:** Nautical Crochet Tunic Dress

Style Code: SB-SS26-DR-09

◆ **Statement Style**

Category: Dresses



**Relaxed A-line Fit with Playful Ocean Motifs**

**Perfect as a beach cover-up or statement resortwear piece**

**Fabric:** Cotton Crochet Knit / Cotton Gauze  
/ Bamboo Fabric

**Sleeve Length:** 3/4th length flared sleeves

**Length:** Mid-thigh length

**Stitching:** Crochet base with blue contrast  
scallop

**Finish:** Metal rings attach 3D hanging charms

**Hardware:** Metal charm rings



**Style Details:**

- V-neckline with contrast blue double trim
- Flared sleeves and body
- 3D crochet hanging charms at hem
- Scalloped hem with contrast blue crochet edging

**Garment Name: Sunburst Sleeve Tassel Dress**

Style Code: SB-SS26-DR-10

◆ **Statement Style**

Category: Dresses



**Breezy silhouette with bold sleeve detail**

**Perfect for elevated resort dressing with artisanal charm**

**Fabric:** Matte Cotton Twill / Linen 14 /  
Poly-Linen Blend

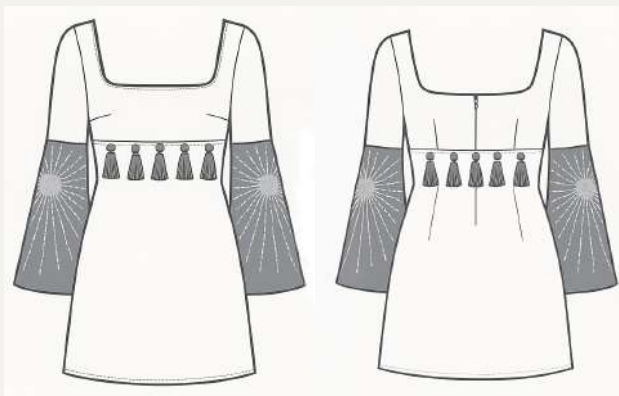
**Sleeve Length:** Full-length bell sleeves

**Length:** Mid-thigh length

**Stitching:** Embroidered contrast sleeves  
with tassels at seam

**Finish:** Square neckline

**Hardware:** Tassels, embroidery



**Style Details:**

- Wide square neckline
- Fitted bodice with bust darts
- Flared bell sleeves in contrast blue with embroidery
- Statement tassels at underbust seam
- Back concealed zip opening



# Standard Size Chart

WOMEN'S RESORT | 2026 VERSION



International Sizing	XS	S	M	L	XL	XXL
US	4	6	8	10	12	14
AU/UK Old	8	10	12	14	16	18
AU/UK New	6	8	10	12	14	16
Bust (cm)	83	87	91	95	99	103
Waist (cm)	65	69	73	77	81	85
Lower Hip (cm)	91	95	99	103	107	111
Inside Leg Length (cm)	72.5	73.5	74.5	76.5	76.5	77
Bust (in)	32.7	34.3	35.8	37.4	39	40.5
Waist (in)	25.6	27.2	28.7	30.3	31.9	33.5
Lower Hip (in)	35.8	37.4	39	40.6	42.1	43.7
Inside Leg Length (in)	28.5	28.9	29.3	29.7	30.1	30.3

Use a tape measure to measure, holding the tape securely around for key points.

- (A) **Bust.** Measure over the fullest area of the bust & straight around the back.
- (B) **Waist.** Measure waist under the rib cage and above the hip.
- (C) **Lower Hip.** Measure the fullest part of the hip ensuring the tape is straight around the body.
- (D) **Inside Leg Length.** Measure the inner thighs from below the crotch straight to the floor level.





## Fabrics

---

We provide a select assortment of high-quality natural fabrics available at low minimum order quantities (MOQs). Additionally, we offer lightweight and breathable man-made fabrics that have an elegant drape—these polyester options are ideal for digital printing.

For more information about fabrics, please contact us through our website.

To know more about our fabric range and color options, [contact us.](#)

# Prints

We do all our prints in house. All of our prints are made using ecological inks.

## Endless print options.

---

### Print Strikes

For all prints, we provide a mock-up and print-strike service. This means we will send you a digital mockup for size approval, followed by a 30x30 cm trial print swatch for your review. You can then assess the print quality personally, and if you find anything unsatisfactory, we'll make the necessary revisions!

For fabric prints, please ensure that the digital print file (artwork) is high-resolution (300DPI+) for optimal printing quality. Acceptable formats include vector, JPG, PNG, TIFF, or any other high-resolution file type.

### Seamless

Artwork should be designed to be seamless or set up for repetition, which means that you can place copies of the print adjacent to one another in all directions, allowing the pattern to align without any disruptions. If the design isn't initially repeatable, you can often mirror the image in four directions to achieve a similar effect. We are here to help you ensure that your print can be repeated and replicated in a coherent pattern.

### Scale

Lastly, the size of your print plays a crucial role. For instance, if you have a design featuring a seashell, consider the height of each seashell. The contrast between a small, 3 cm seashell and a large 15 cm seashell will significantly impact the outcome.

### Print Options

\*includes worldwide license



Your own print



[Pinterest](#)



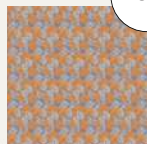
[Shutterstock](#)



# Seamless Prints



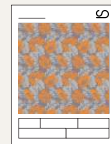
Artwork to be repeated and scaled



Scale A



Scale B



30 x 30 cm  
Strike Off



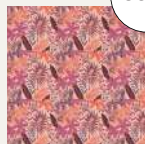
Send to customer  
for approval



Artwork to be repeated and scaled



Scale A



Scale B



30 x 30 cm  
Strike Off



Send to customer  
for approval



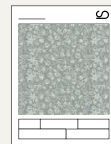
Artwork to be repeated and scaled



Scale A



Scale B



30 x 30 cm  
Strike Off



Send to customer  
for approval



# Shipping

We ship globally using trusted international couriers like DHL, MAERSK LINE or other high-quality logistics partners to ensure safe, secure, and timely delivery of both samples and bulk orders.

## Sample Shipment

### Lead Time

Typically 4–7 business days worldwide.

### Shipping Cost

Varies based on location and sample quantity. Final cost shared before dispatch.

## Bulk Shipment

### Lead Time

Usually 4–7 business days, plus 1–3 days for customs clearance through air shipment, but for shipping by sea time varies depending on the location

### Shipping Cost

Depends on destination, order volume, and carton sizes. We'll provide a quote before shipment.

## Custom & Duty

We prepare all necessary shipping documents to ease customs clearance.

While we assist in minimizing delays, the buyer is responsible for any import duties or taxes imposed by the destination country.

# SUSTAINABILITY

---

## Responsible Design. Conscious Production.

We embed sustainability at every level, from ethically sourced, certified recycled fabrics to low-impact dyeing and finishing processes. Our production is audited for ethical labor practices and transparency through Sedex-compliant frameworks.

Our preferred materials include **Better Cotton, Recycled Polyester**, and thoughtfully selected natural blends like **bamboo, modal, and organic cotton**, chosen for their drape, breathability, and environmental impact.

We're ready to support both boutique and bulk production with traceability, quality, and purpose.

**Sustainability certifications and reports available upon request**





## Frequently Asked Questions

---

### **I'm new to fashion business and want to start my own. Any tips?**

We work closely with both new and established brands. If you're starting out, we can help you refine your product line, select suitable fabrics, and align your designs with resortwear trends that perform well in the market.

### **Is your production ethical? Sustainable?**

We manage the entire production process to ensure high standards of ethical practices and sustainability. From fair working conditions to responsible sourcing, every step is handled with care.

### **Do you have a minimum order quantity (MOQ)?**

While we focus on bulk production, our flexibility allows us to assess orders based on style complexity, fabric, and production capacity. Please [contact us](#) to discuss your production needs and volume suitability.

### **What are your payment terms?**

For bulk production, we typically require a 50% deposit upfront and the balance before dispatch. First-time clients may be requested to pay 100% upfront depending on order size and location. We accept bank transfers and offer secure payment options.

---

### **How long does production take?**

Timelines depend on the complexity of the order and fabric availability. Typically:

- Sampling: 1–2 months
- Bulk production: 2-3 months
- Delivery via DHL Express, 4-5 business days worldwide.

We'll confirm exact timelines once final styles and fabrics are selected.

### **What other collections do you make?**

At JK International, our collections are inspired by the essence of island living, drawing from Hawaiian culture, relaxed vacation moods, and effortless daily wear.

While our core remains women's resortwear, we're also expanding into adjacent categories that reflect a broader, lifestyle-driven approach to comfort, travel, and everyday elegance.

### **What kind of styles or products do you not do?**

We specialize in garments — tops, dresses, bottoms, and co-ord sets. If your design involves non-textile components or materials we don't work with, we'll guide you accordingly.

### **Are my designs safe with you?**

Yes. We treat all client information, sketches, and production plans with full confidentiality. If required, we're happy to work under NDAs and ensure your designs are never reused, shared, or disclosed.

### **Is bulk production required after sampling?**

No! Sampling doesn't bind you to proceed with bulk, though we primarily partner with brands looking to scale production. You'll retain full rights over your developed patterns.

---

### **Which design files do you accept?**

We accept design files in the following formats: **AI, PSD, PDF, TIFF, SVG, and PNG**. These are versatile and widely used across design, sampling, and production workflows, ensuring a smooth and seamless collaboration process.

### **Who are your typical clients?**

We primarily work with resortwear brands, retailers, and importers catering to vacation and holiday markets. Many of our clients prefer to keep their designs confidential, and we honor that.

Whether you're an emerging label or an established wholesaler, we're here to help you scale.

### **Can we visit your office or production site?**

Absolutely! We'd love to host you. On-site visits are available by prior appointment.

We welcome the opportunity for you to meet our team, explore how we work, and gain a deeper understanding of our sampling and production process.

Whether you're interested in seeing our materials, quality standards, or day-to-day operations, we're happy to walk you through it all in person.







JK International

[anubhavkripal@jjkinternational.com](mailto:anubhavkripal@jjkinternational.com)

+91-9457025012

+911203103873

